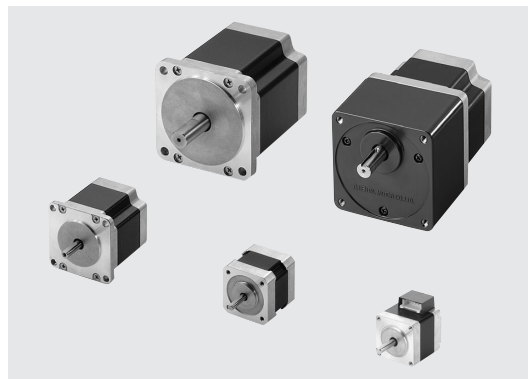




## 2-Phase Stepping Motors

Six frame sizes are available in a range from 1.10 in. (28 mm) to 3.35 in. (85 mm). In addition to the standard type, we offer standard **P** type (high torque), **PV** Series (high inertia capability), high-resolution type and **SH** geared type. The motor windings also come in various specifications.



### Wide Variety

Series/Type	Size	Motor Frame Size: in. (mm)					
		□1.10 in. (□28 mm)	□1.38 in. (□35 mm)	□1.65 in. (□42 mm)	□2.22 in. (□56.4 mm) <sup>*1</sup>	□2.65 in. (□60 mm)	□3.35 in. (□85 mm) <sup>*2</sup>
PK Series	Standard Type	—	—	 Page C-202	 Page C-214 with Encoder page → C-233	—	 Page C-227
	Standard <b>P</b> Type (High Torque)	 Page C-196	 Page C-200	 Page C-204	—	—	—
	High Resolution Type	—	—	 Page C-208	 Page C-218 with Encoder page → C-239	—	—
	<b>SH</b> Geared Type	 Page C-198	—	 Page C-212	 Page C-222 <sup>*1</sup>	—	 Page C-231 <sup>*2</sup>
<b>PV</b> Series (High Inertia Capability)	—	—	—	—	 Page C-224	—	

<sup>\*1</sup> Gearhead frame size is 2.65 in. sq. (60 mm sq.)

<sup>\*2</sup> Gearhead frame size is 3.54 in. sq. (90 mm sq.)